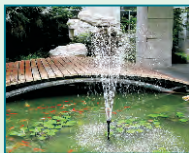


ADJUSTABLE POND WATER FOUNTAIN PUMP INSTRUCTION MANUAL



ECO-3800PPF
ECO-4600PPF
ECO-5800PPF
ECO-6500PPF



INSTRUCTIONS

Before installing your All Pond Solutions ECO pump ensure you have read the instructions and taken note of all safety advice. If you have any further questions or concerns please contact the retailer before installing the ECO system.

ELECTRIC

The pump comes complete with a generous supply of 3 core cable, however, should any additional cable be required then the use of an approved waterproof cable connector is essential.

- Power supply must be earthed and fused at 3 amps
- Regularly inspect cables for damage and deterioration
- For permanent installation to mains supply or outdoor use it is your responsibility to comply with the regulations of the local electricity authority
- Consult a qualified electrician if unsure about any aspect of wiring

The wires in the mains electrical lead are coloured in accordance with the following code (image1):

BLUE - Neutral (marked with an "N" in most terminal connections)

BROWN - LIVE (marked with an "L" in most terminal connections)

GREEN/YELLOW - EARTH (marked "E" or in most terminal connections)

Building Regulations England and Wales 2005

Installation of this product for outdoor use is classified 'notifiable' and requires you to inform the local authority building control department prior to installation for approval.

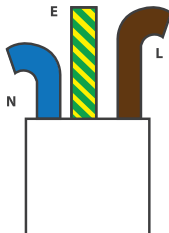


image1

SAFETY

IMPORTANT: Disconnect the mains electricity supply before attempting any installation/maintenance or handling of any kind.

- Only run your PPF fully submerged
- The PPF should never be run dry as this will cause the unit to overheat and cause permanent damage
- Do not attempt to modify this unit in any way and only use the recommended parts for replacement
- All connections must be earthed
- Do not connect to any voltage other than that stated on the pump
- Do not place in liquids other than water
- Do not use in water above 90°F or 30°C

OPERATION

- ① Assemble ECO pump as shown on diagram
- ② Ensure attached additional pipework secured using clip/bracket
- ③ Fully submerge pump-part on flat surface
- ④ Power ON

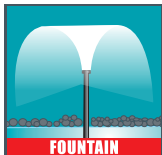
MAINTENANCE

- At regular intervals dependent on water conditions it will be necessary to clean the unit and remove any waste build-up from filtration grille to prevent blockage and loss of flow
- Regularly inspect pump and cable for damage and excessive wear

Important: Disconnect mains electricity supply before handling or attempting maintenance.

1

YEAR GUARANTEE



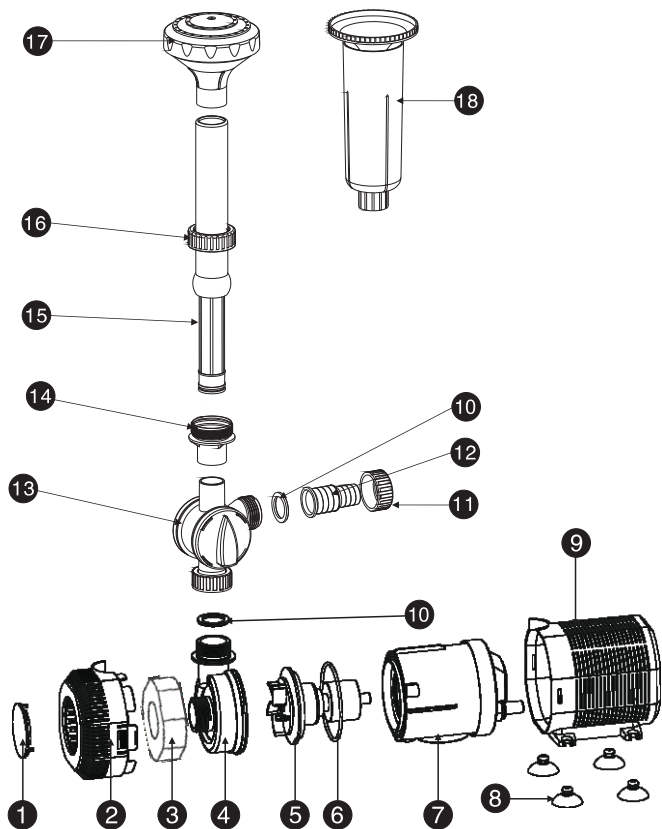
FOUNTAIN

ECO

ENERGY SAVING



BOTH FOR FRESH & SALT WATER



PARTS DIAGRAM

1	FRONT COVER	6	ROTOR O-RING	11	OUTLET NUT	16	SHAFT NUT
2	FRONT CASING	7	MOTOR	12	OUTLET HOSETAIL	17	FOUNTAIN HEAD (1)
3	FILTER SPONGE	8	SUCTION CUPS	13	OUTLET VALVE	18	FOUNTAIN HEAD (2)
4	ROTOR COVER	9	REAR CASING	14	SHAFT O-RING		
5	ROTOR	10	OUTLET O-RING	15	EXTENDABLE SHAFT		

SPECIFICATION

MODEL	ECO-3800PPF	ECO-4600PPF	ECO-5800PPF	ECO-6500PPF
OUTPUT	3800 L/H	4600 L/H	5800 L/H	6500 L/H
POWER	55W	70W	95W	140W
VOLTAGE	230V/50Hz	230V/50Hz	230V/50Hz	230V/50Hz
H-MAX	2.8m	3.5m	4m	5m
HOSE OUTLET	$\frac{3}{4}$ - 1" / 18mm - 24mm	$\frac{3}{4}$ - 1" / 18mm - 24mm	$\frac{3}{4}$ - 1" / 18mm - 24mm	$\frac{3}{4}$ - 1 $\frac{1}{4}$ " / 18mm - 28mm
WEIGHT	2.8kg	2.8kg	2.8kg	3kg
CABLE LENGTH	10m	10m	10m	10m

WARRANTY INFORMATION

Standard 12 month warranty will apply to all new All Pond Solutions products from date of purchase. Exclusions include perishable and consumable items such as foams, bulbs and impellers. Warranty valid in the event of an established electrical or manufacturing fault.

Warranty may not apply in the event of the following: misuse, negligence, improper use, failure to follow adequate maintenance guidelines and accidental damage.

This does not affect your statutory rights.

In the event of product failure please return unit to retail outlet with valid proof of purchase.

